
KIRKPATRICK & COMPANY

*Is Pleased to Announce
The Exclusive Offering of...*

**Savanna Farm
40 acres +/-
393 Thomas Road
Paris, KY**



\$875,000

Arnold Kirkpatrick, Broker
(859) 231-8444

Cathy S. Davis
(859) 806-9444

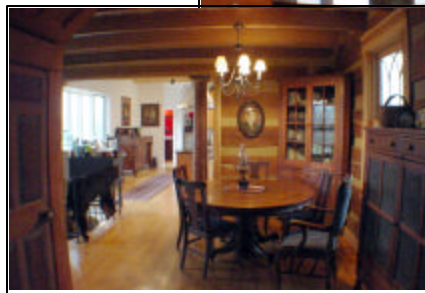
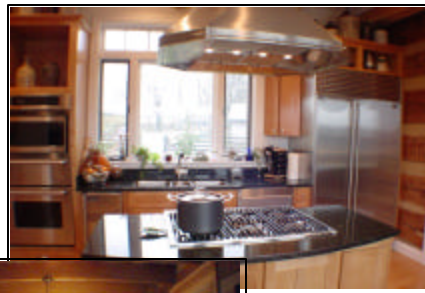


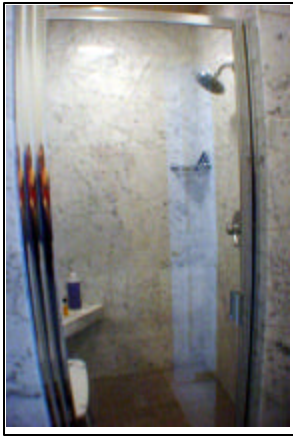
Originally part of Xalapa Farm, this secluded property offers a unique main residence, part of which is a reconstructed 100+ yr. old log home.



Included in the log cabin portion amid exposed logs and hardwood floors, the living room, dining room, and kitchen offer a cozy setting.

The gourmet kitchen includes a stainless steel sub-zero refrigerator, Thermador hood cook top, microwave, oven w/warmer; icemaker & ASCO dishwasher, as well as black granite countertops.





The spacious marble master bathroom includes, a steam shower and separate tub.



The home also features four bedrooms, master bedroom, 3½ baths, home office, rec room, utility room and in-ground pool.

The property contains a 10-bent post & beam barn containing a 3,000+/- sf apartment with commercial heat & air, an office/workshop, gardening shed, dock on Stoner Creek and two fields with automatic waterers.

