

---

---

**KIRKPATRICK & COMPANY**

---

---

*Fact Sheet*

A Portion of Ashwood  
84.98 Acres +/-  
Newtown Road, Fayette County



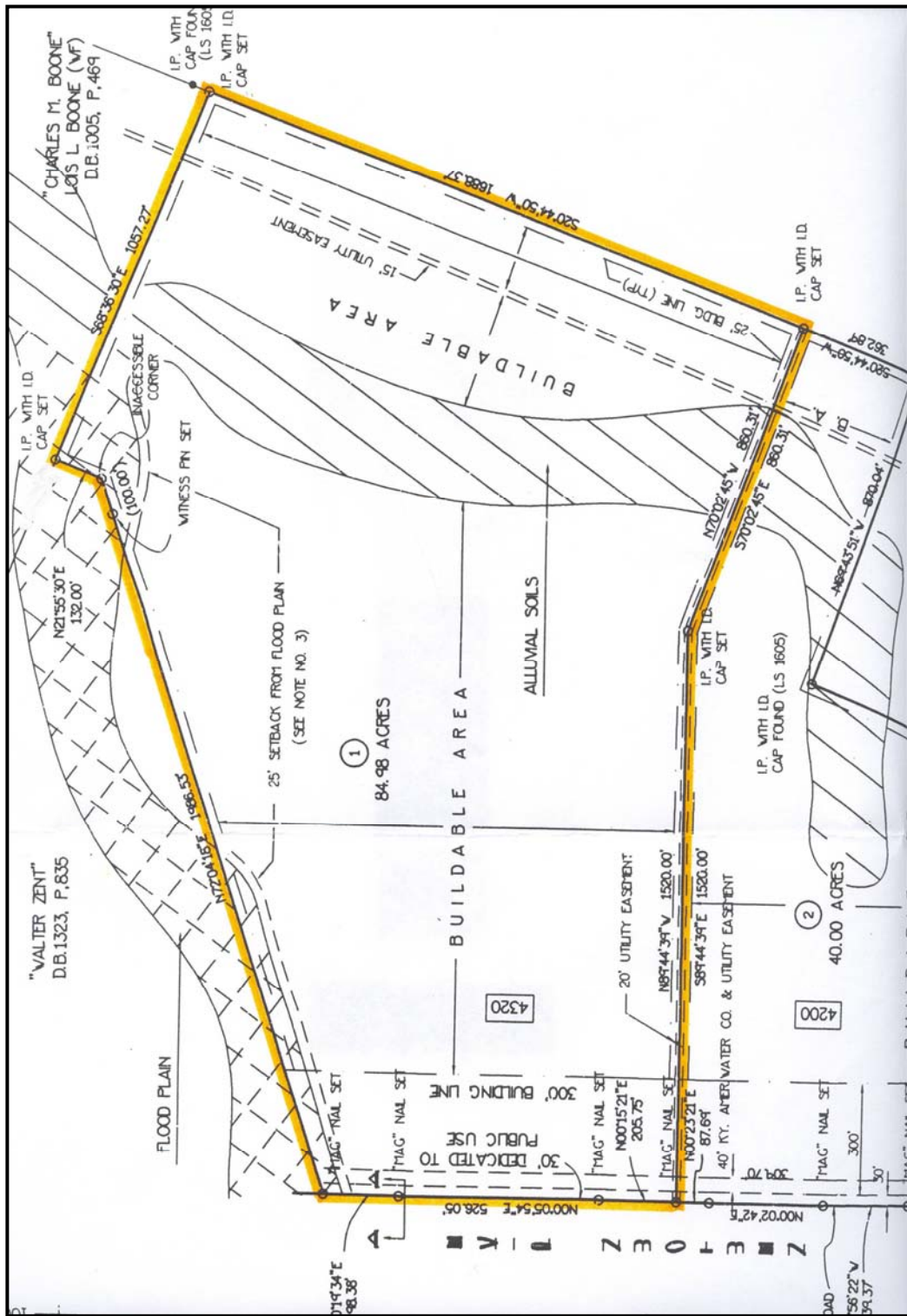
Excellent land.

Approximately 3 miles from the Kentucky Horse Park. May be divided

**\$22,500/Acre**

Arnold Kirkpatrick, Broker  
(859) 231-8444

535 W. 2<sup>nd</sup> Street, Suite 104, Lexington, KY 40508  
Phone (859) 231-8444 Fax (859) 254-8372  
[www.kirkfarms.com](http://www.kirkfarms.com)



**A Portion of Ashwood**  
**84.98 Acres +/-**  
**\$22,500/Acre**  
**Newtown Road, Fayette County**



## Summary by Map Unit — Fayette County Area, Part of Fayette County, Kentucky

| Map unit symbol                   | Map unit name                                   | Rating  | Acres in AOI | Percent of AOI |
|-----------------------------------|---|---|--------------|----------------|
| ArB                               | Armour silt loam, 2 to 6 percent slopes (elk)   | All areas are prime farmland  | 12.1         | 14.3%          |
| Ea                                | Egam silt loam (woolper)                        | Prime farmland if protected from flooding or not frequently flooded during the growing season | 3.6          | 4.2%           |
| Hu                                | Huntington silt loam                            | All areas are prime farmland  | 4.4          | 5.2%           |
| MIB                               | Maury silt loam, 2 to 6 percent slopes          | All areas are prime farmland  | 27.5         | 32.7%          |
| MIB2                              | Maury silt loam, 2 to 6 percent slopes, eroded  | All areas are prime farmland  | 15.8         | 18.7%          |
| MIC2                              | Maury silt loam, 6 to 12 percent slopes, eroded | Farmland of statewide importance  | 20.9         | 24.8%          |
| Totals for Area of Interest (AOI) |   |   | 84.2         | 100.0%         |