
KIRKPATRICK & COMPANY

Fact Sheet

3137 W. Leestown Road
210.310 Acres +/-
Woodford County, Kentucky



210 acres of exceptional land (almost 97% Maury and McAfee), beautifully located less than 4 miles from Midway and priced to sell by an estate. Lots of road frontage both on Leestown and Woodlake Roads. Property is improved with two metal equipment buildings in average condition and a couple tobacco barns which need work.

~~**\$3,470,000**~~

Reduced to \$14,500/Acre

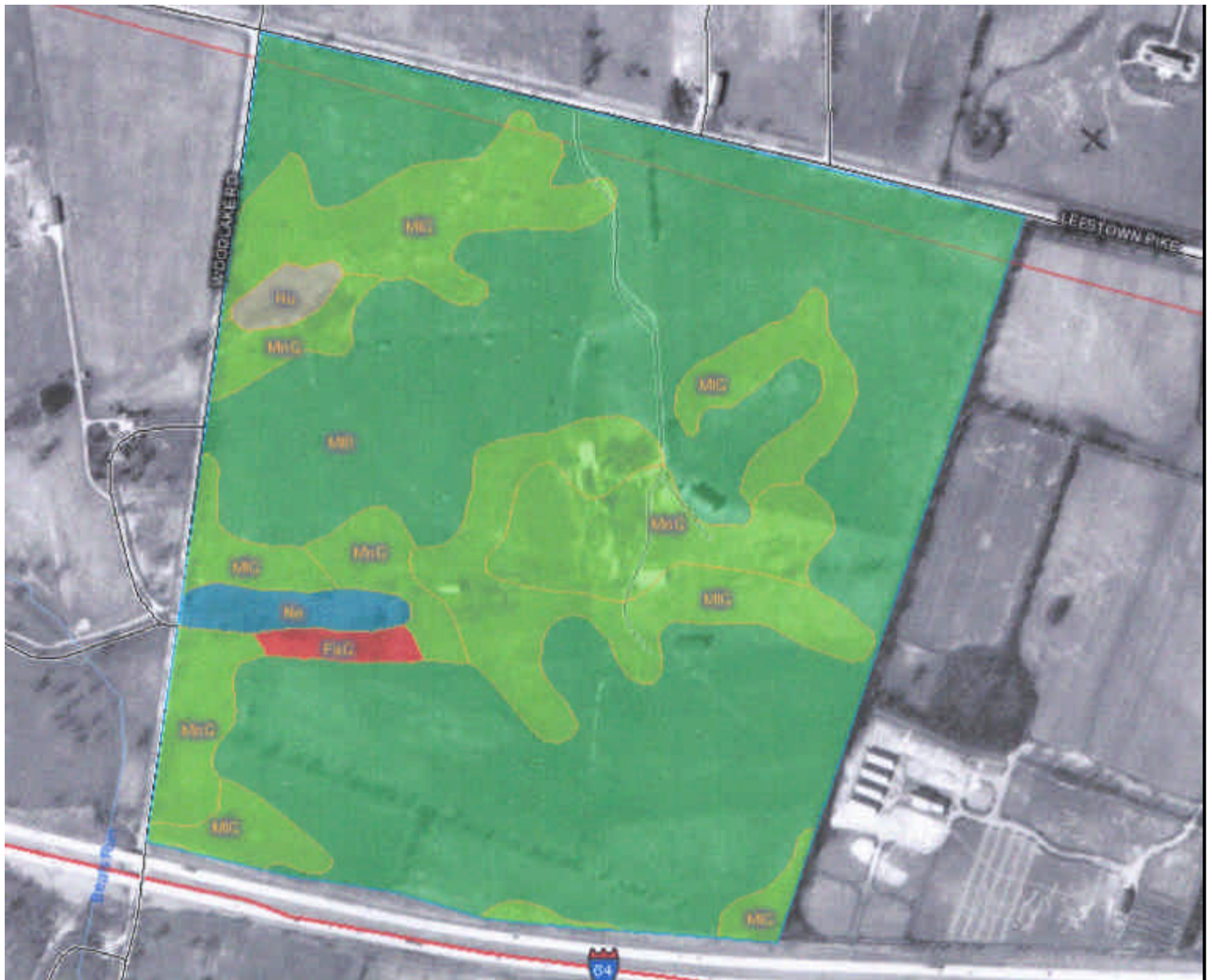
Arnold Kirkpatrick, Broker
(859) 231-8444

P.O. Box 580, Lexington, KY 40588
Phone: 859-231-8444 Fax: 859-254-8372
www.kirkfarms.com



Grace W. Meyers Estate
210.31 Acres
3137 Leestown Road
Fayette County

Arnold Kirkpatrick
(859) 231-8444



Summary by Map Unit — Jessamine and Woodford Counties, Kentucky (3)

Map unit symbol	Map unit name	Rating	Acres in AOI	Percent of AOI
FaC	Fairmount flaggy silty clay, 6 to 12 percent slopes	Not prime farmland	1.8	0.8%
Hu	Huntington silt loam	Prime farmland if protected from flooding or not frequently flooded during the growing season	1.8	0.9%
MIB	Maury silt loam, 2 to 6 percent slopes	All areas are prime farmland	138.1	65.6%
MIC	Maury silt loam, 6 to 12 percent slopes	Farmland of statewide importance	42.6	20.3%
MnC	McAfee silt loam, 6 to 12 percent slopes	Farmland of statewide importance	22.0	10.5%
Ne	Newark silt loam	Prime farmland if drained and either protected from flooding or not frequently flooded during the growing season	3.5	1.7%
Totals for Area of Interest (AOI)			209.8	100.0%

Grace W. Meyers Estate
 210.31 Acres
 3137 Leestown Road
 Fayette County

Arnold Kirkpatrick
 (859) 231-8444